



## MODES OF STUDY

### Online Support

Blackboard is a comprehensive and flexible web-based learning platform, which supports all postgraduate modules. Blackboard provides all students with detailed course materials and access to relevant papers, as well as the opportunity to participate in live online discussion with fellow students and tutors.

### Full-time Study

All students will have access to module material on Blackboard. In addition, full-time study also involves attendance at a mixture of classes and seminars of 12-15 hours. Full-time students are required to study four modules per semester.

### Part-time Study

Part-time students are often employed out with their studies. Study patterns are flexible in order to take account of students' other commitments. In addition to online support via blackboard, students also attend seminars and tutorials on campus. The same University facilities are available to part-time students as for full-time students.

### Online/Distance Learning

Many students opt to study online rather than attend campus-based classes. Online modules are run in parallel with campus delivery, and distance learning students access modules online through Blackboard. This e-learning environment enables distance learners to engage in online discussion with campus students. Study and assessment can be completed entirely online. The modes of attendance are flexible and students may move from on campus to distance learning or vice versa after completion of any module

### Work-based Learning

Students who are currently employed in a relevant work setting may complete the practice placement in their own workplace.



### APPLICATIONS

All applicants must apply to the University directly. Forms can be obtained by contacting University Direct on freephone 0800 027 1000 or by emailing [uni-direct@paisley.ac.uk](mailto:uni-direct@paisley.ac.uk)

### FURTHER INFORMATION

For more information on any of the courses, please contact:

Centre for Alcohol and Drug Studies  
University of Paisley  
Paisley PA1 2BE

t: 0141 848 3788

f: 0141 848 3891

e: [cads@paisley.ac.uk](mailto:cads@paisley.ac.uk)

w: [www.paisley.ac.uk/cads](http://www.paisley.ac.uk/cads)

## MSc Alcohol & Drug Studies

“ These qualifications are highly valued by employers and graduates are in high demand. ”

- > course aims
- > modular structure
- > course content
- > modes of study
- > entrance requirements





## The Centre for Alcohol and Drug Studies

THE CENTRE FOR ALCOHOL AND DRUG STUDIES (CADS), AS PART OF THE UNIVERSITY OF PAISLEY, HAS 25 YEARS EXPERIENCE AND EXPERTISE IN THE DELIVERY OF POSTGRADUATE QUALIFICATIONS IN ALCOHOL AND DRUG STUDIES. THESE QUALIFICATIONS ARE VALUED BY EMPLOYERS AND GRADUATES OF THIS PROGRAMME ARE HIGHLY SOUGHT AFTER.

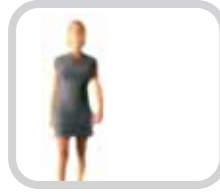
These flexible study programmes have been designed to meet the needs of applicants seeking work in specialist settings. Each of the qualifications are relevant to existing professionals currently working in the substance use field. The programmes are also appropriate for non-specialists who work in relevant health, social care and other settings, including the police and prison services. In addition, the MSc qualification equips graduates with the necessary skills to pursue a research career.

### MODULAR STRUCTURE

Each programme is taught on a modular basis and involves compulsory and optional study modules. This provides flexibility for students. Depending on the mode of study chosen, there are a number of different routes towards obtaining each qualification.

There are three levels of postgraduate qualification, each of which comprise a set number of modules.

- > A Postgraduate Certificate (PgC) is awarded on successful completion of 4 modules.
- > A Postgraduate Diploma (PgD) is awarded on successful completion of 8 modules.
- > A Masters (MSc) qualification is awarded on successful completion of 12 modules.



### ENTRANCE REQUIREMENTS

Entrants should normally possess a degree in a relevant subject. Students who do not possess a degree will be invited to substantiate their academic ability by submitting a piece of written work.

### FLEXIBILITY

Each of the courses can be studied either full or part-time, on a day-release basis. Students may also select to either attend classes on campus or study by distance-learning.

### COURSE CONTENT

A total of 15 postgraduate modules are available, all of which are validated at MSc level. The modules available will depend on which course you enrol for. In addition, the majority of the modules can be studied on a stand-alone basis.

The modules available are:

- > Understanding Alcohol/Drug Use and Consequences (compulsory)
- > Alcohol/Drugs Social Policy
- > Intervention Methods (compulsory for 'with practice' awards)
- > Mental Health, Alcohol and Drugs
- > Research Methods
- > Theories of Behaviour Change
- > Harm Reduction (Policy in Action)
- > Alcohol/Drugs Practice Placement
- > Evaluation of Alcohol and Drug Services
- > Critical Review/Research Proposal (double module)
- > Data Handling (MSc only)
- > Research Implementation (triple module/MSc only)



### PgC Alcohol and Drug Studies (with practice)

The PgC develops a broad understanding of current issues and evidence-based practice, reflecting employers' requirements in this specialist field.

Students must study Understanding Alcohol/Drug Use and Consequences and Intervention Methods, as well as undertaking a practice placement. The practice placement can be taken at your place of work. This qualification prepares students to work effectively by equipping them with knowledge on evidence-based intervention methods in addictive behaviours, as well as the opportunity to apply theory in a practical environment.

### PgD Alcohol and Drug Studies (with practice)

Students must study Understanding Alcohol/Drug Use and Consequences, as well as Intervention Methods and Research Methods. In addition, students will complete a practice placement and choose any two modules from the list of single modules available. The placement can be undertaken at your place of work.

The Critical Review/Research Proposal is a compulsory element of this course, whereby students demonstrate a critical understanding of a particular aspect of substance use as well as addressing relevant research questions. This qualification prepares the student to work effectively within the field by equipping them with knowledge on intervention methods in addictive behaviours, as well as the opportunity to apply theory in a practical real world environment.

### MSc Alcohol and Drug Studies (with practice)

Entry to the MSc is dependent on successful completion of the PgD at grade B1 or above. In addition to the routes offered for the PgD, students must study data handling and research implementation. The latter triple module is designed to enable students to demonstrate their skills in independent research on a topic of their choice.

*NB. To reflect the diversity of an ever-changing work and research environment, all named qualifications can be awarded 'without practice' by replacing the practice placement and the intervention methods modules with other selections.*