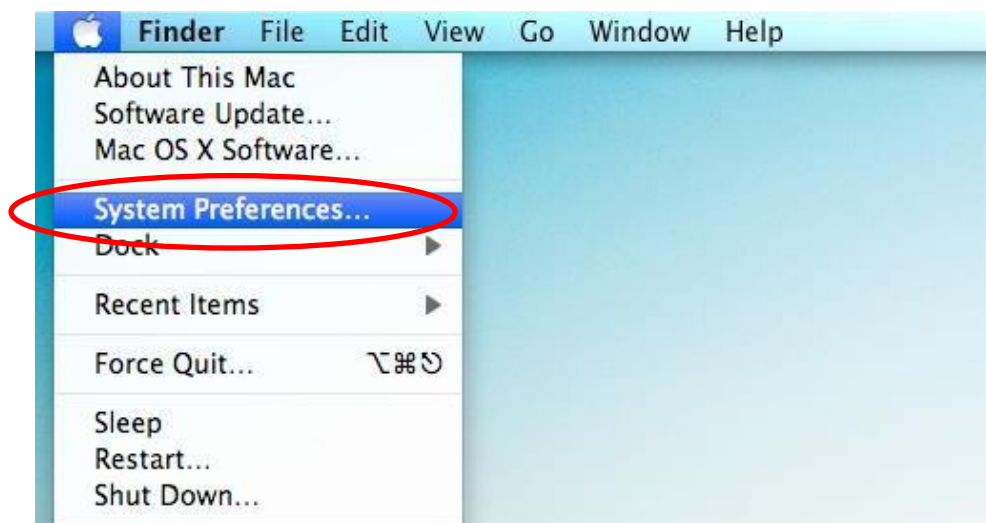


Instructions for connecting to University of the West of Scotland's Wireless Network – MAC 10.5

Instructions for Connecting To the Wireless Network

Note these instructions are for MAC OS X 10.5 and Safari only

1. Ensure your *AirPort* card is switched on
2. Go to *Apple* -> *System Preferences*



The *System Preferences* window should open

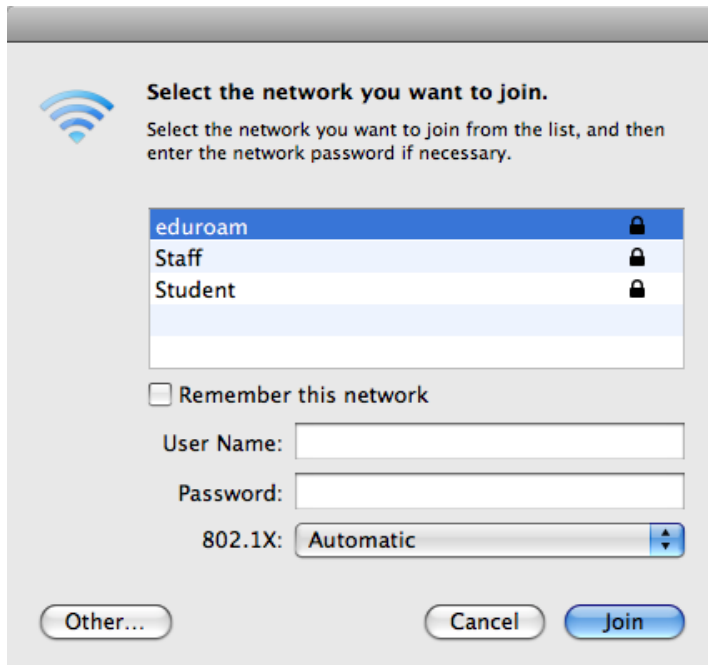
3. Click on the *Network* icon



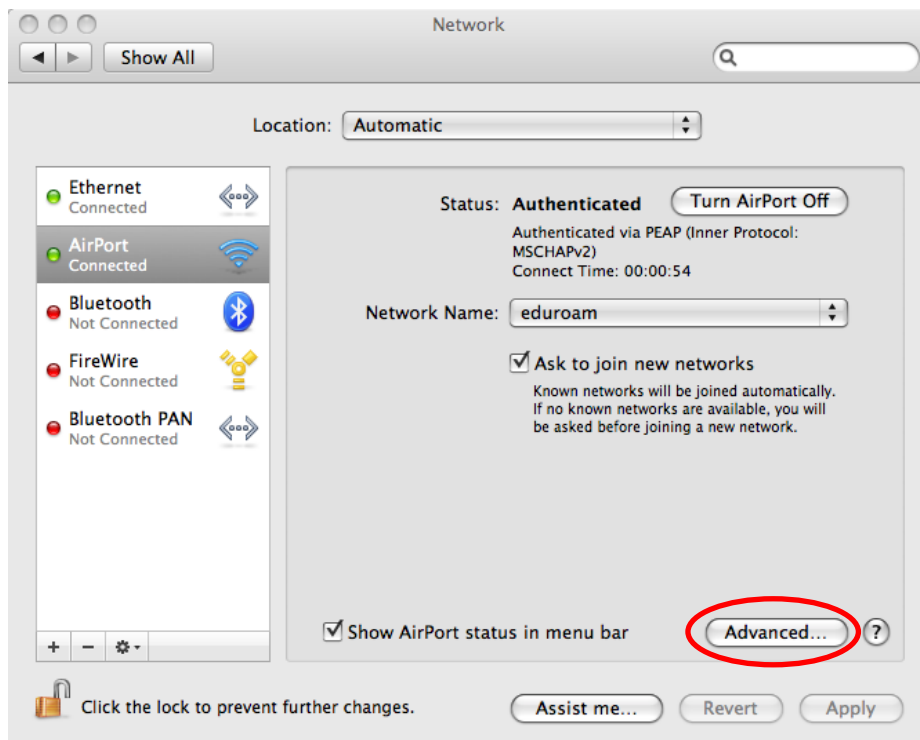
4. Click *AirPort* then click the text box beside *eduroam*



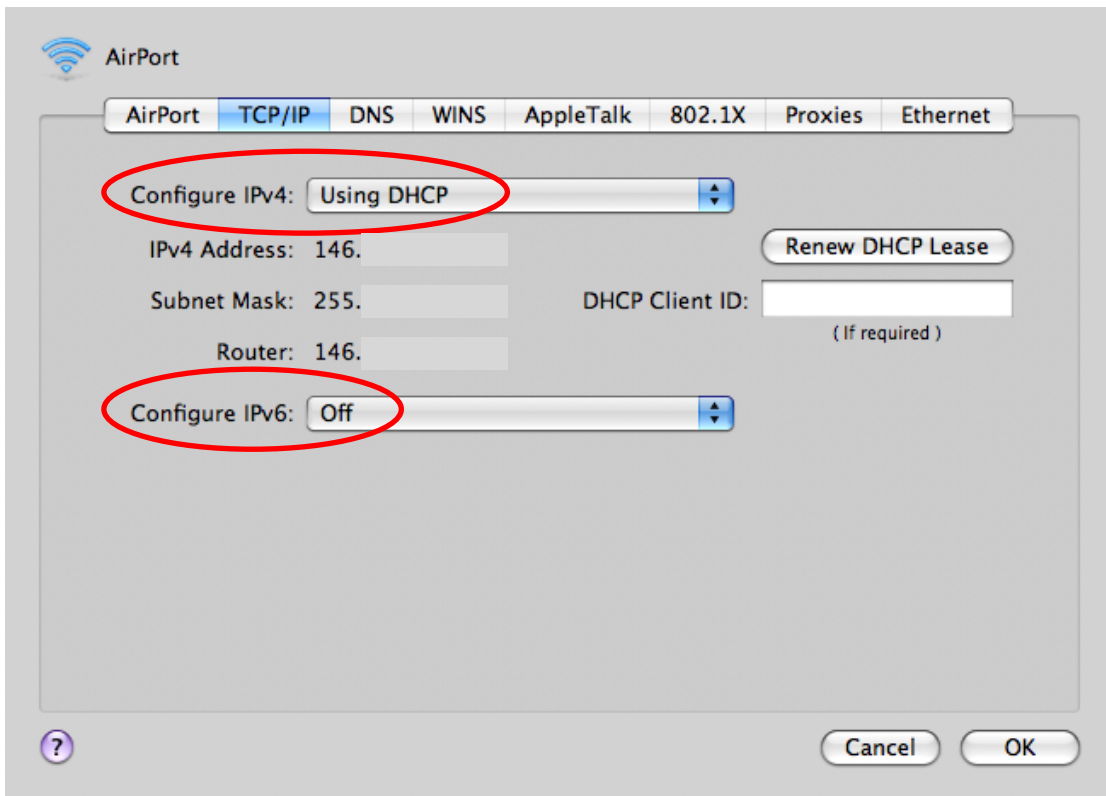
5. Click on *Join Other Network* and type *eduroam* for the *Network Name*
Choose *WPA2 Enterprise* for Security
For the *Username* and *Password* type your staff email address and password
Check *Remember This Network* then click *Join*



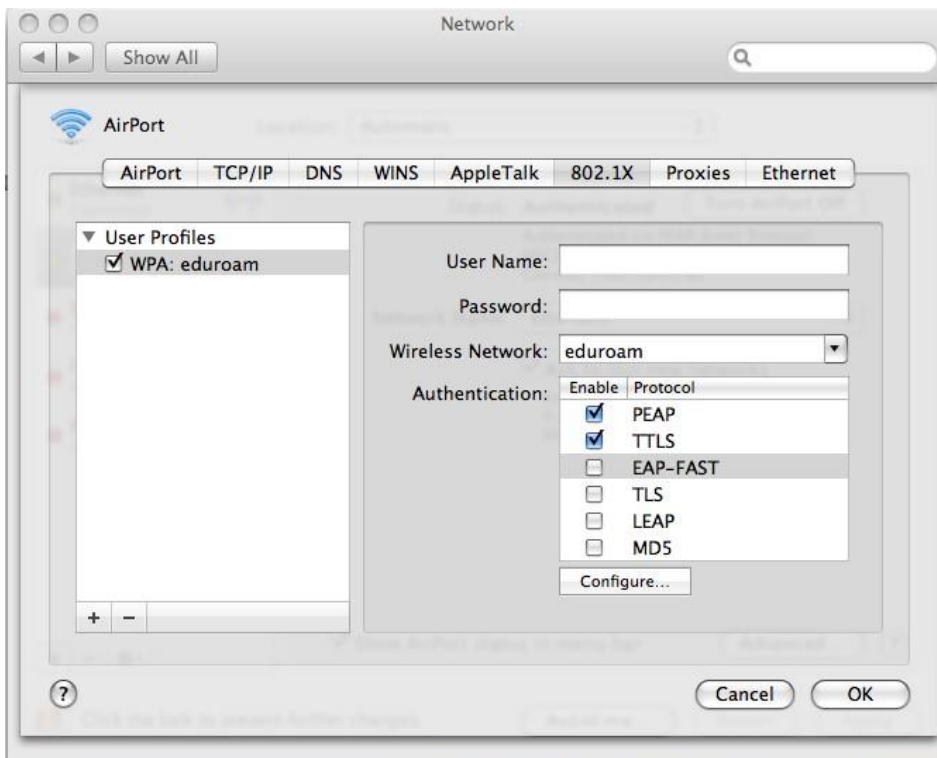
6. Click *Advanced*



7. Select *TCP/IP* and ensure it's set to *Using DHCP* and *Off*



8. Select *802.1X*, uncheck *TLS*



9. Start Safari

