



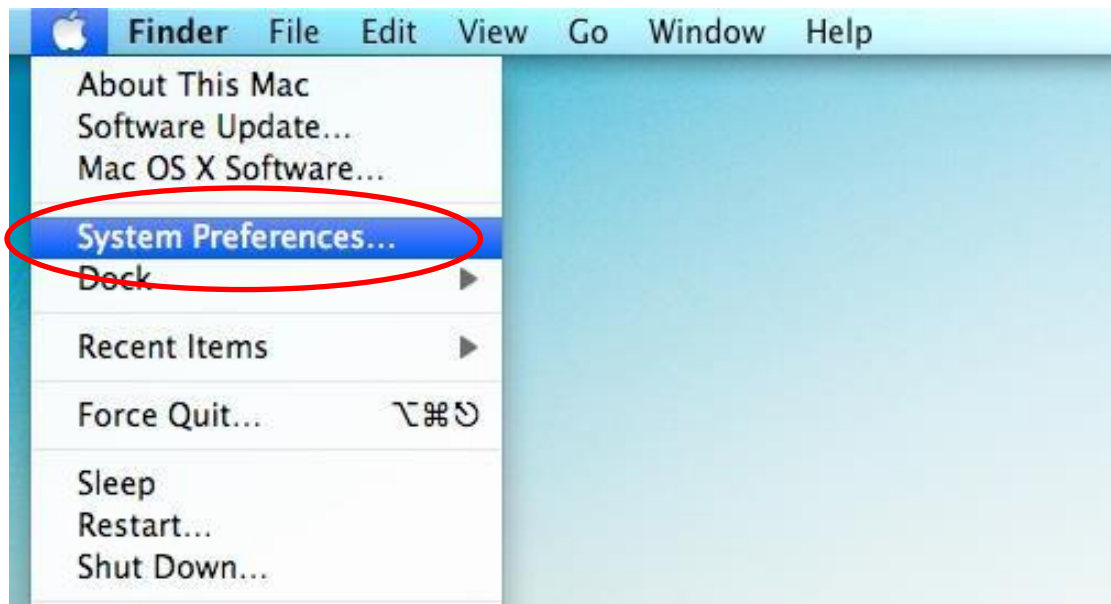
Instructions for connecting to University of the West of Scotland's Wireless Network – MAC 10.6

Instructions for Connecting To the Wireless Network

Note these instructions are for MAC OS X 10.6 and Safari only

1. Ensure your *AirPort* card is switched on

2. Go to *Apple* -> *System Preferences*

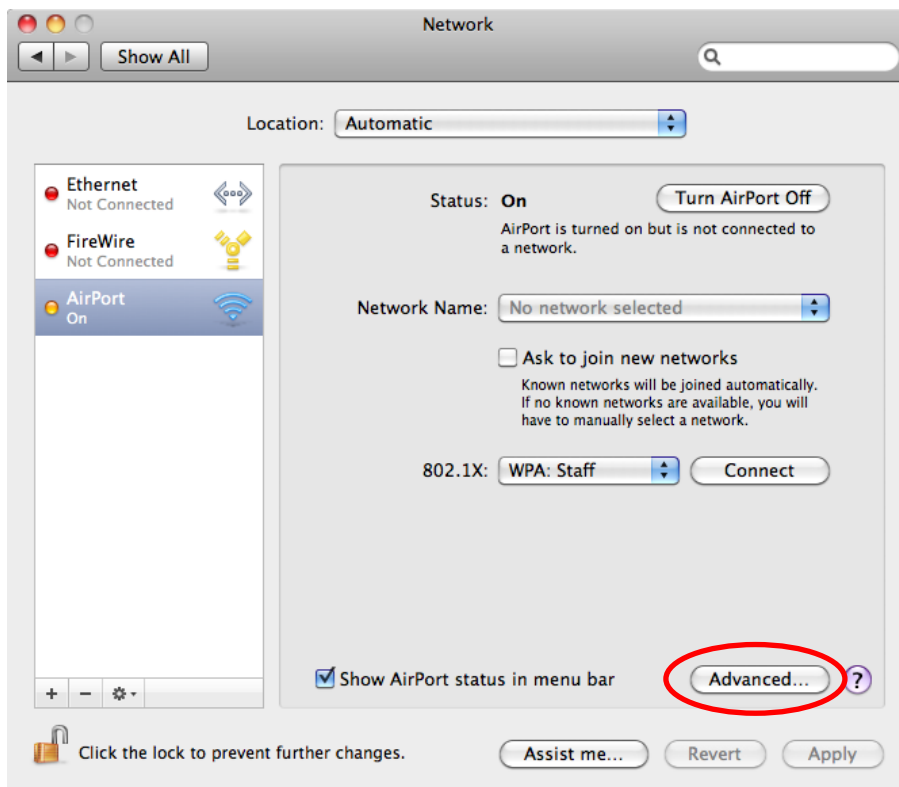


The *System Preferences* window should open

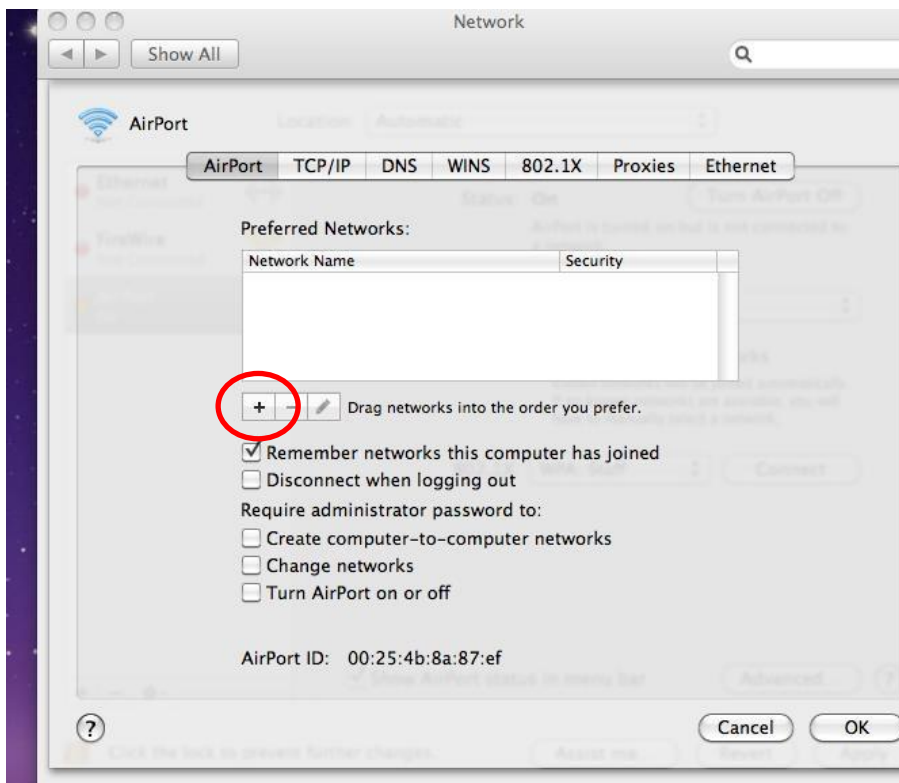
3. Click on the *Network* icon



4. Click *AirPort* then click *Advanced*



5. Click on the +



6. Type *eduroam* for the *Network Name*, choose *WPA2 Enterprise* for *Security* For the *Username* and *Password* type your UWS email address and your password is your Moodle / PC Login password. Check *Remember This Network* then click *Join*

Enter the name of the network.

Enter the name of the network you want to add, and then enter the password if necessary. You can also click Show Networks to see a list of available networks.

Network Name:

Security:

User Name:

Password:

802.1X:

7. Select *TCP/IP* and ensure it is set to *Using DHCP* and *Off*

AirPort

AirPort TCP/IP DNS WINS AppleTalk 802.1X Proxies Ethernet

Configure IPv4:

IPv4 Address: 146.

Subnet Mask: 255.

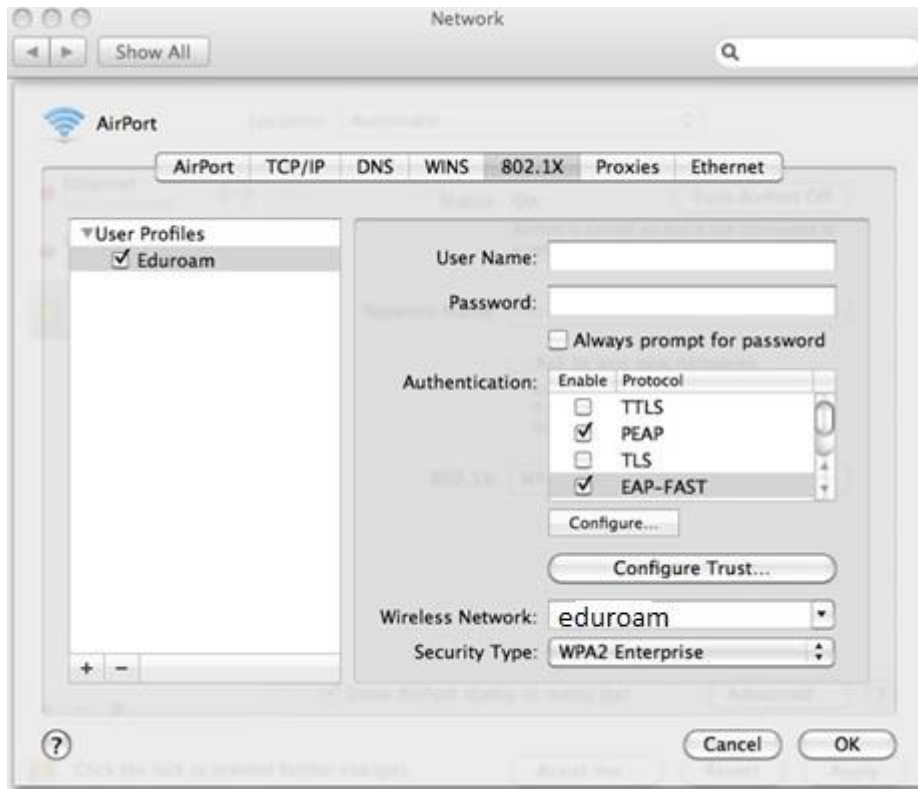
Router: 146.

DHCP Client ID:

(If required)

Configure IPv6:

8. Select *802.1X*, uncheck *TLS*



9. Start *Safari*

